



V2
ESC 1:50

3 N6 ø8.0 C=770 (1c)
720
1 N5 ø8.0 C=764 (2c)
714
2x4 N3 ø6.3 C=730 (PELE)
720

430

P8 P9 P10

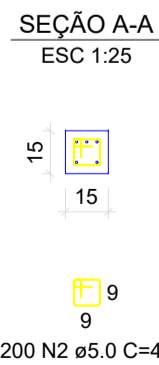
17.3 320.7 50 320.7 17.3
15 x 80 15 x 80
320.7 320.7
13 N1 c/26 13 N1 c/26


4 N4 ø8.0 C=720 (3e1c+1e2c)

SEÇÃO A-A
ESC 1:25

80
15
74
9

26 N1 ø5.0 C=170



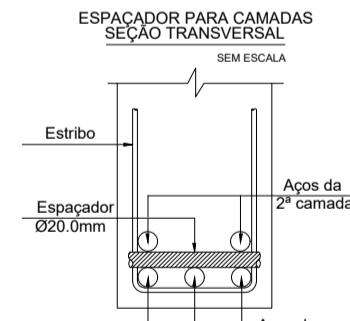
| Legenda dos pilares | |
|--|-----------------|
|  | Pilar que morre |

| RESUMO DO AÇO | | | | |
|--------------------|--------------|----------------|-------------------------|--------------------|
| AÇO | DIAM (mm) | C.TOTAL (m) | QUANT + 10% (Barras) | PESO + 10% (kg) |
| CA50 | 6.3 | 116.8 | 11 | 31.4 |
| | 8.0 | 171.5 | 16 | 74.4 |
| CA60 | 5.0 | 186 | 18 | 31.5 |
| PESO TOTAL (kg) | | | | |
| CA50 | 105.9 | | | |
| CA60 | 31.5 | | | |

Volume de concreto (C-25) = 1.79 m³
Área de forma = 27.25 m²

| ELEMENTO | SIGLA |
|-----------------|--------------|
| VIGA BALDRAME | VB |
| VIGA DE TOPO | V |
| PILAR | P |
| PAREDE DAS ALAS | PAR |
| LAJES DE BASE | L |

| Bitola (mm) | Bitola (polegada) | Peso kg/m | Peso kg/barra |
|----------------|----------------------|--------------|------------------|
| 5,0 | 3/16 | 0.140 | 1.68 |
| 6,3 | 1/4 | 0.245 | 2.94 |
| 8,0 | 5/16 | 0.395 | 4.74 |
| 10,0 | 3/8 | 0.617 | 7.40 |
| 12,5 | 1/2 | 0.963 | 11.55 |
| 16,0 | 5/8 | 1.578 | 18.93 |
| 20,0 | 3/4 | 2.466 | 29.59 |
| 25,0 | 1 | 3.853 | 46.23 |
| 32,0 | 1 1/4 | 6.313 | 75.75 |
| 40,0 | 1 9/16 | 9.865 | 118.38 |



REVISÃO: 03

03/04